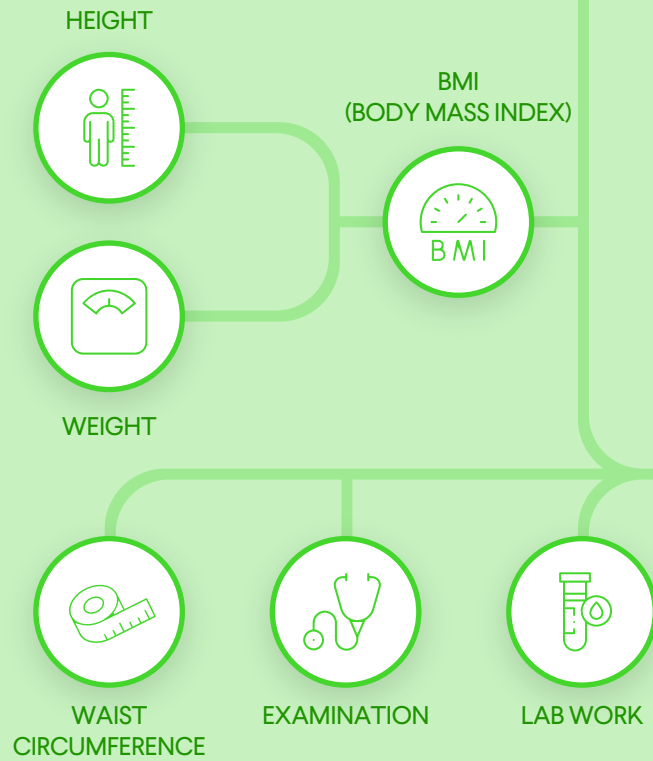


CONTEMPLATION



INITIAL ASSESSMENTS



DIAGNOSIS AND STAGING

COMPLICATIONS*



STAGE 1
NO COMPLICATION(S)* PRESENT

STAGE 2
COMPLICATION(S)* MILD TO MODERATE

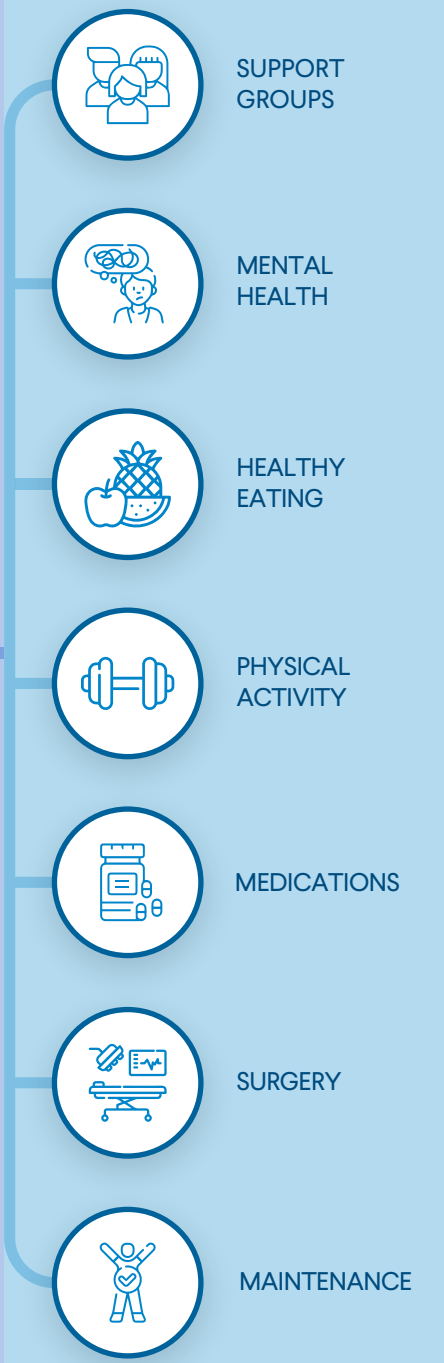
STAGE 3
COMPLICATION(S)* SEVERE

TREATMENT AND SETTING REALISTIC GOALS



REEVALUATION
GOALS, SYMPTOMS,
STAGING, TREATMENT

CARE AND CONTINUITY



*Complications could include high blood pressure, prediabetes, type 2 diabetes, heart disease, nonalcoholic fatty liver disease, osteoarthritis, and more.

